

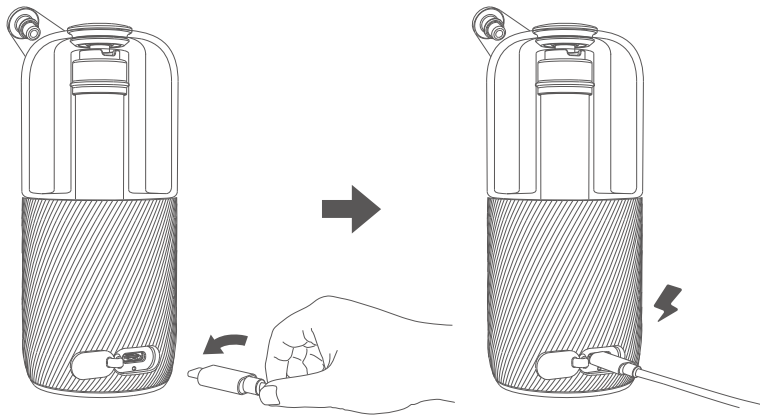
CENOTE

QUICK START



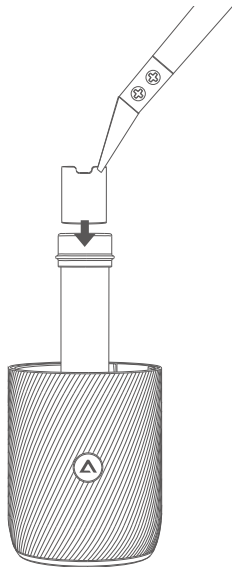
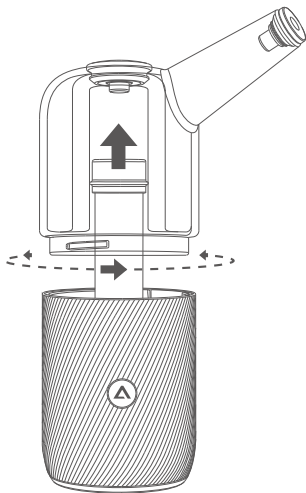
© AUXO All rights reserved. Subject to alteration.

1. CHARGE



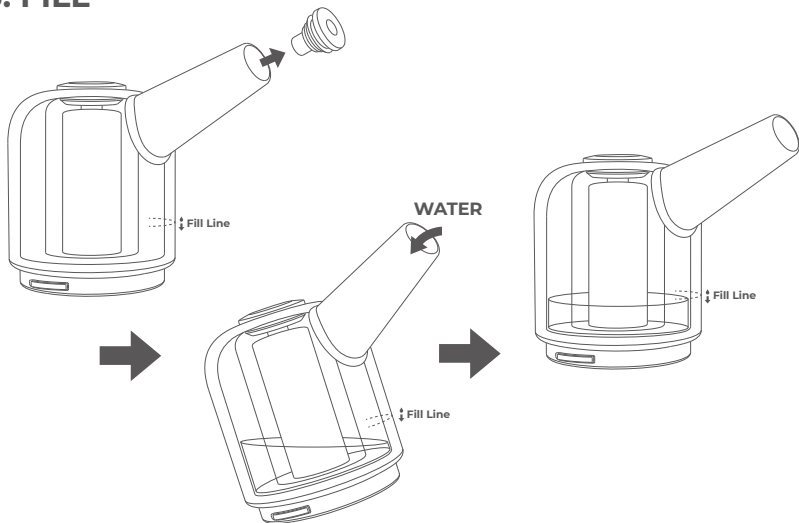
Charge before use.

2. PREP



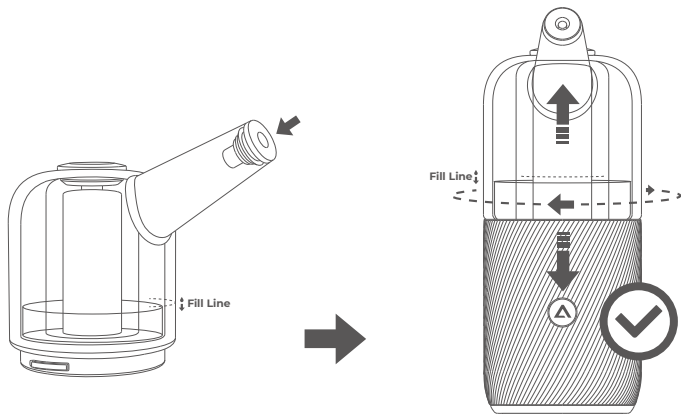
Press nail firmly into the heating rod.

3. FILL



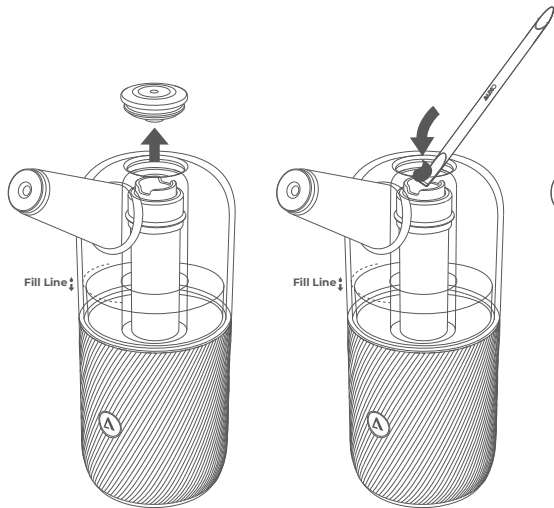
Remove nozzle, fill water from pipe.

4. INSTALL



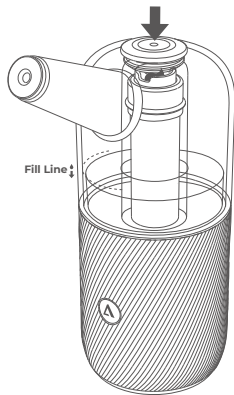
Place nozzle back and secure mouthpiece on device. Pipe should align with  button.

5. LOAD



Remove carb cap and place material in nail.

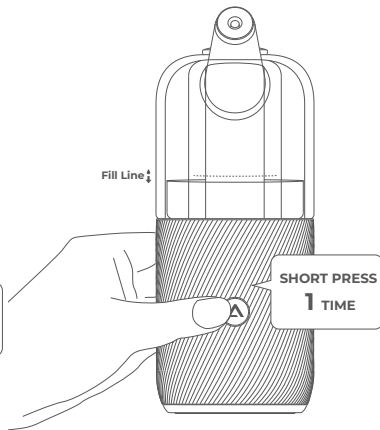
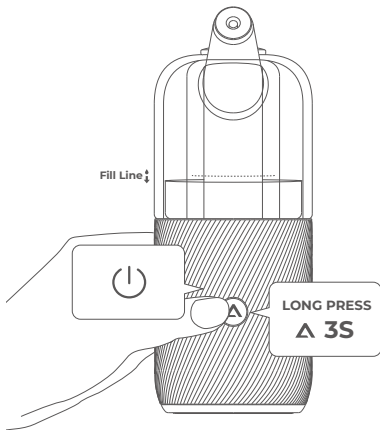
*Recommended filling: 10-20mg (about the size of a lentil).



Secure carb cap back in place.

6. START

Press **▲** button to select setting.



40s
518°F
(270°C)



40s
572°F
(300°C)

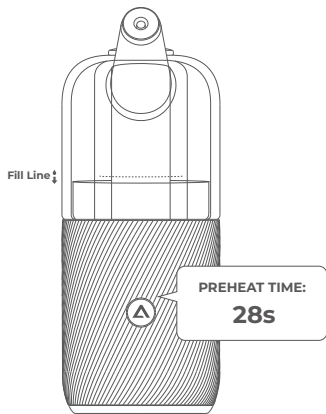


80s
626°F
(330°C)

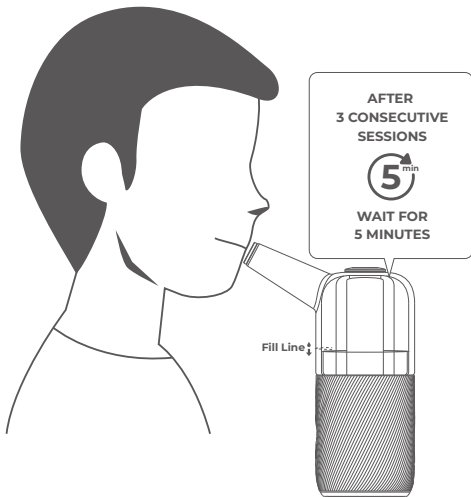


PRO
MODE
20s-90s
392 - 644°F
(200-340°C)

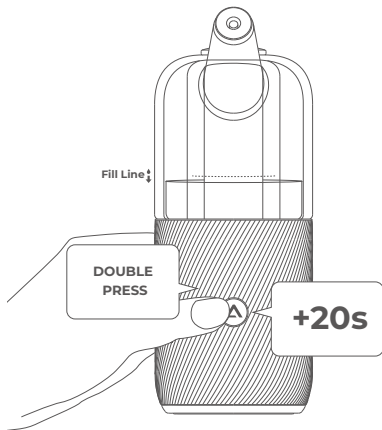
7. ENJOY



After selection,
leave idle for 5s to start session.



8. EXTEND



Double press ▲ 20s before session ends to extend session.

PRO MODE

To use Pro Mode, download the AUXO Connect app.

DOWNLOAD THE APP



IN-SESSION LIGHTING EFFECTS

Controlled via the AUXO Connect app.



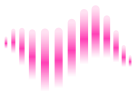
Lumino (Default)



Aurora



Purple Haze



Cranberry Vodka



UFO



Lava

*More options available upon in-app notification.

Not for sale to minors.

This vaporizer is only intended for use with products made from federally legal hemp as defined in relevant provisions of the 2018 Farm Bill and codified at 7 U.S.C. § 1639o(1) and 21 U.S.C. § 802(16)(B)(i) and are not intended for use with any illegal controlled substance.

This product is not designed or intended to vaporize any nicotine or liquid product.

WARNING: Reproductive Harm - www.P65warnings.ca.gov

Visit us at www.AUXO-OFFICIAL.COM

FOLLOW US @AUXOVAPOR



Project No.	DB02-01-KIT	Version	V01	Unit	mm
Project Name	AUXO_Cenote Quick Start_烧膏二代快速指南				
Design	HC	Supplier	-	Output Date	20220601

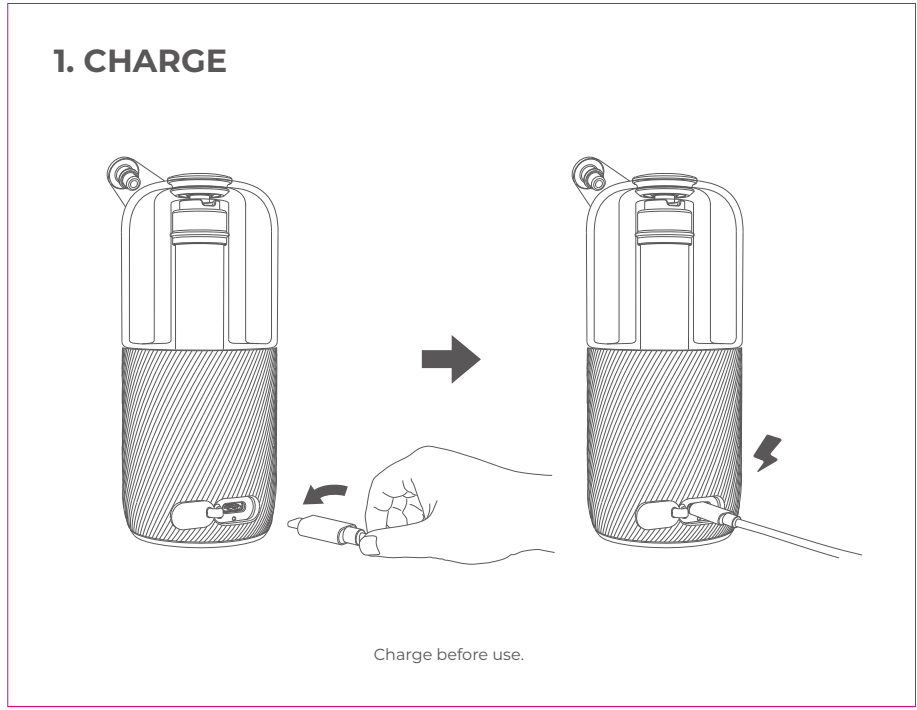
Signature:

Cenote Quick Start_烧膏二代快速指南

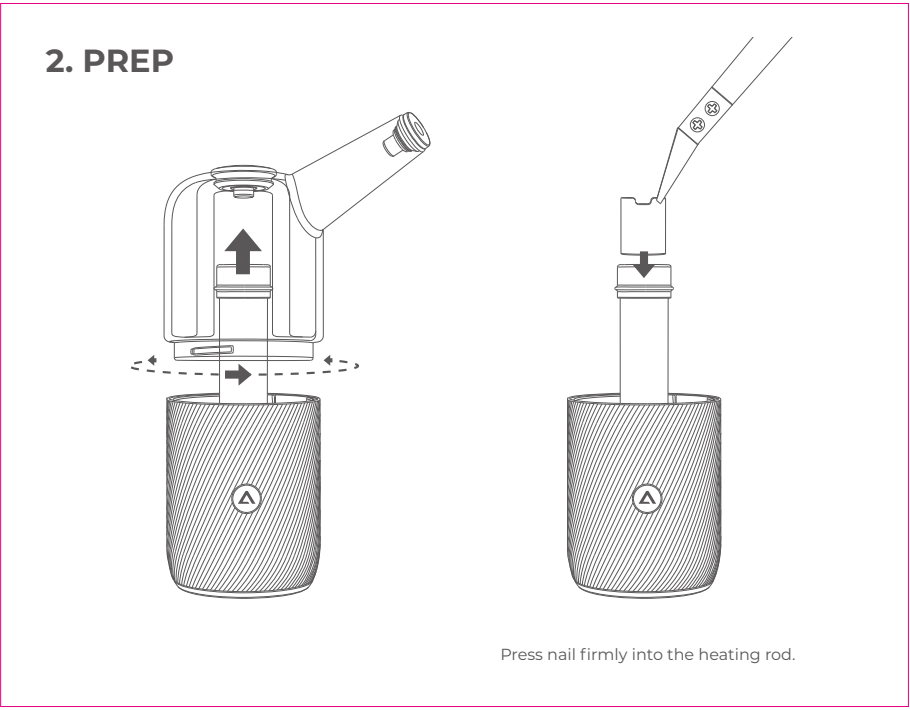
- 1.展开尺寸：240*93mm，成品尺寸：120*93mm
- 2.材质：105g铜板 对折 12pp 骑马钉
- 3.表面处理：四色印刷



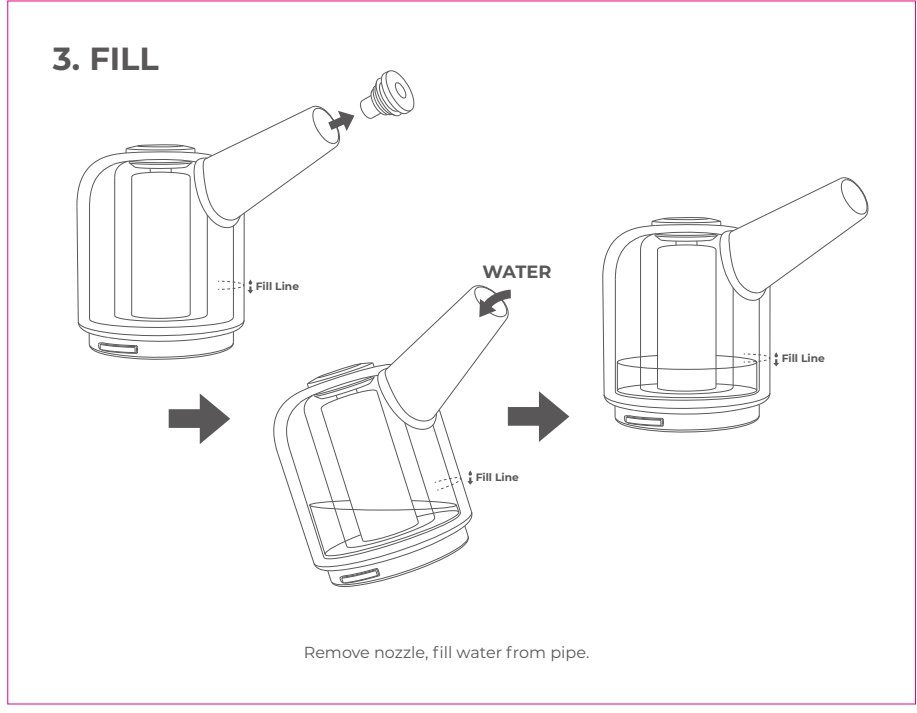
封面



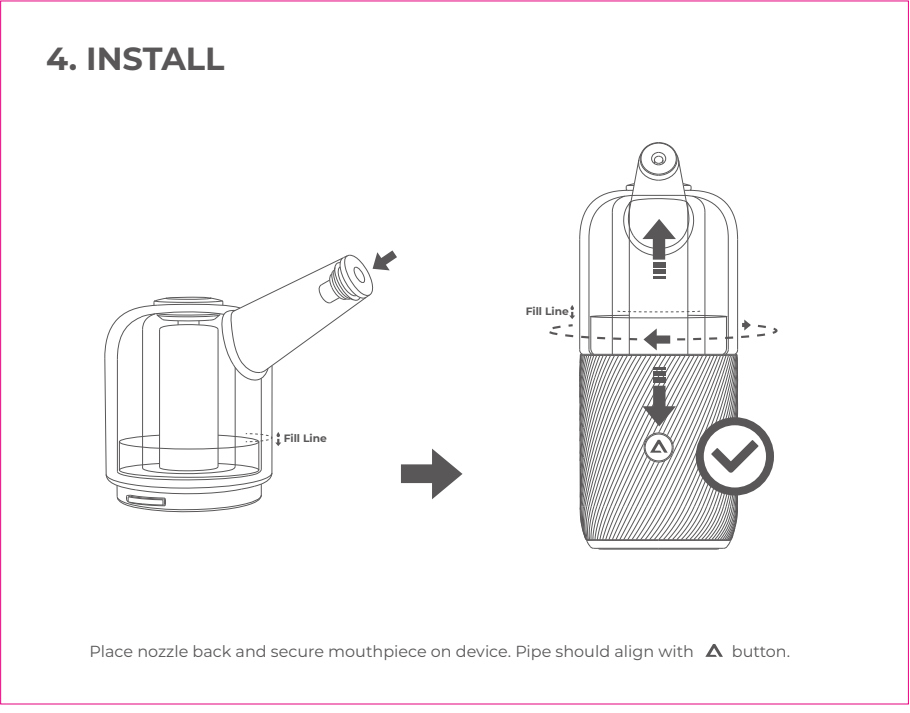
2



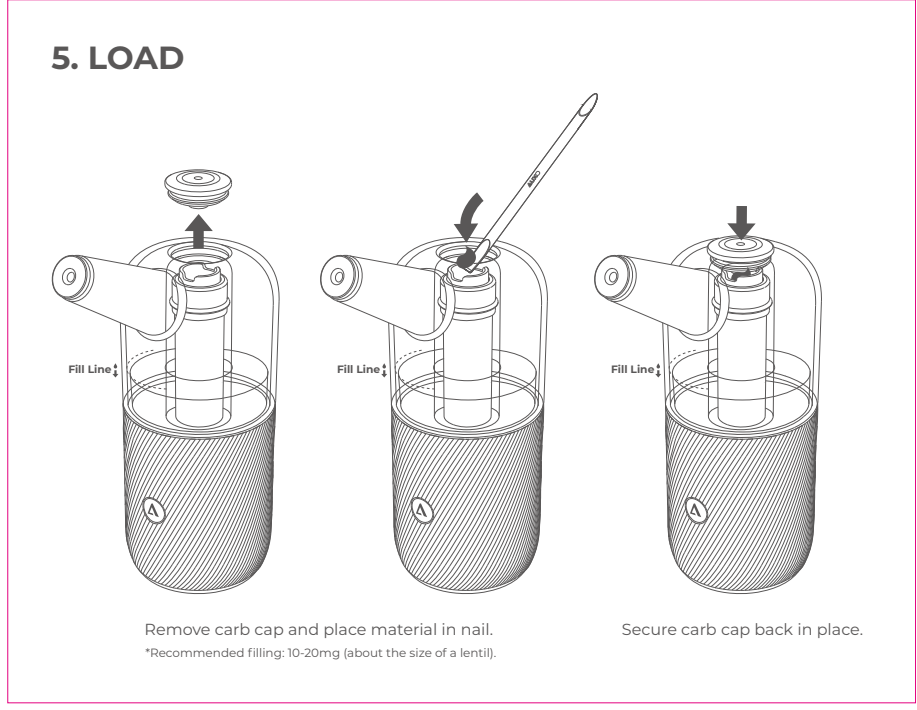
3



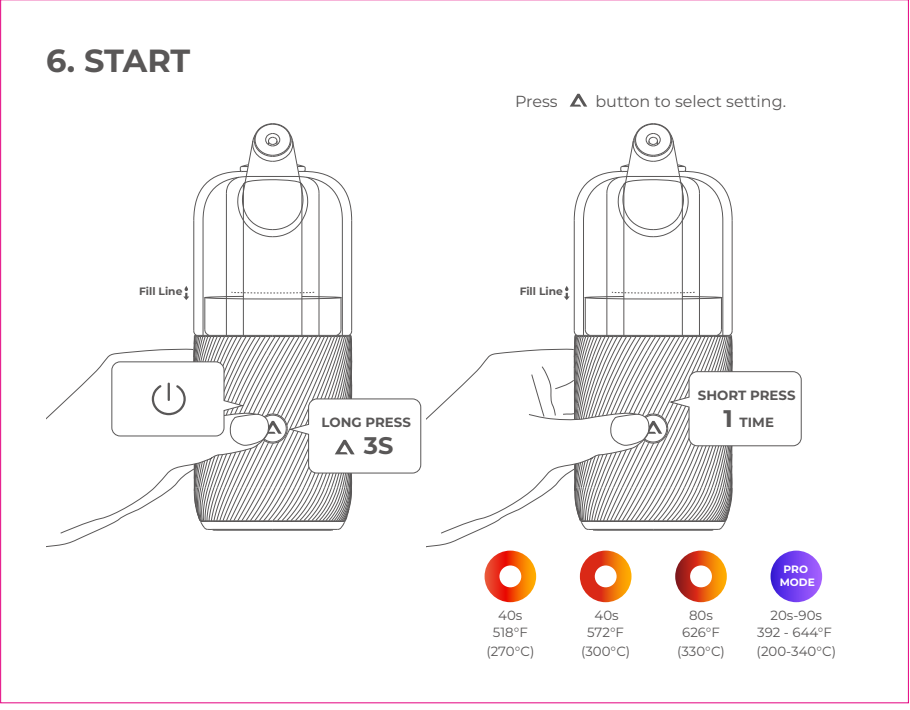
4



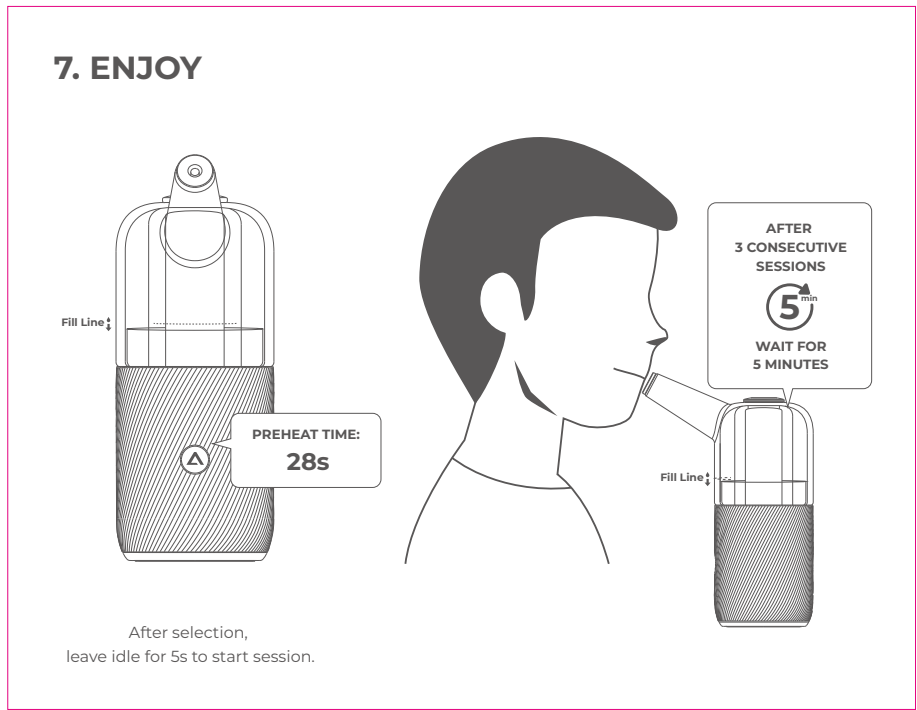
5



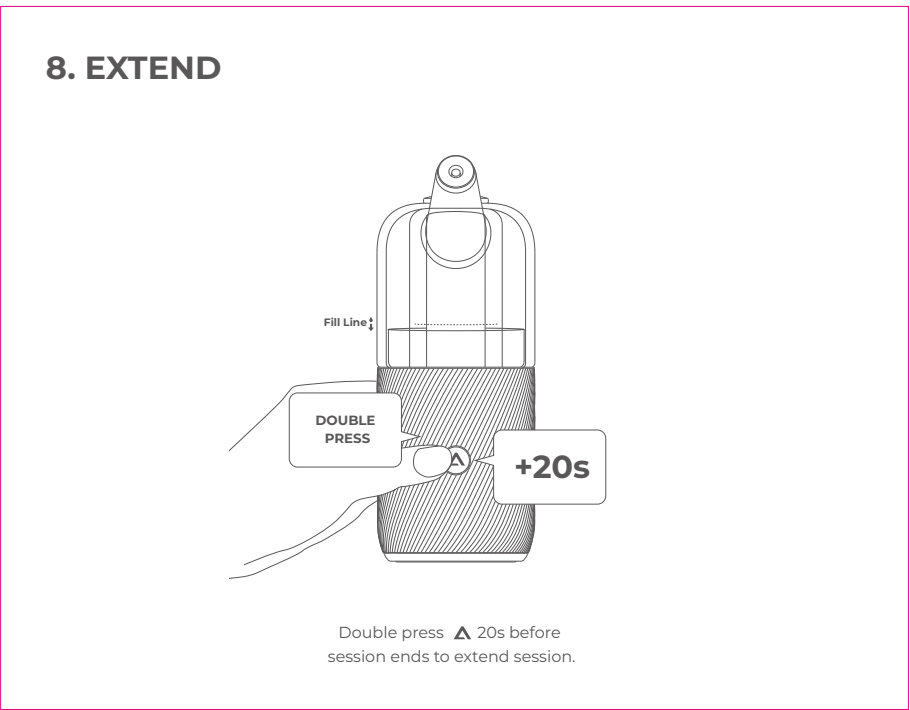
6



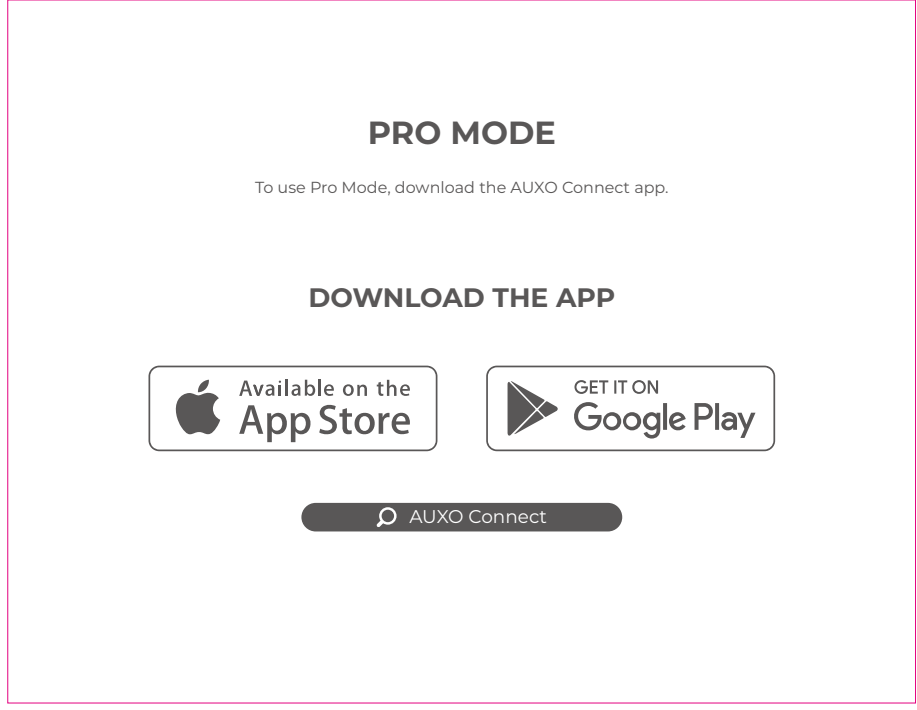
7



8



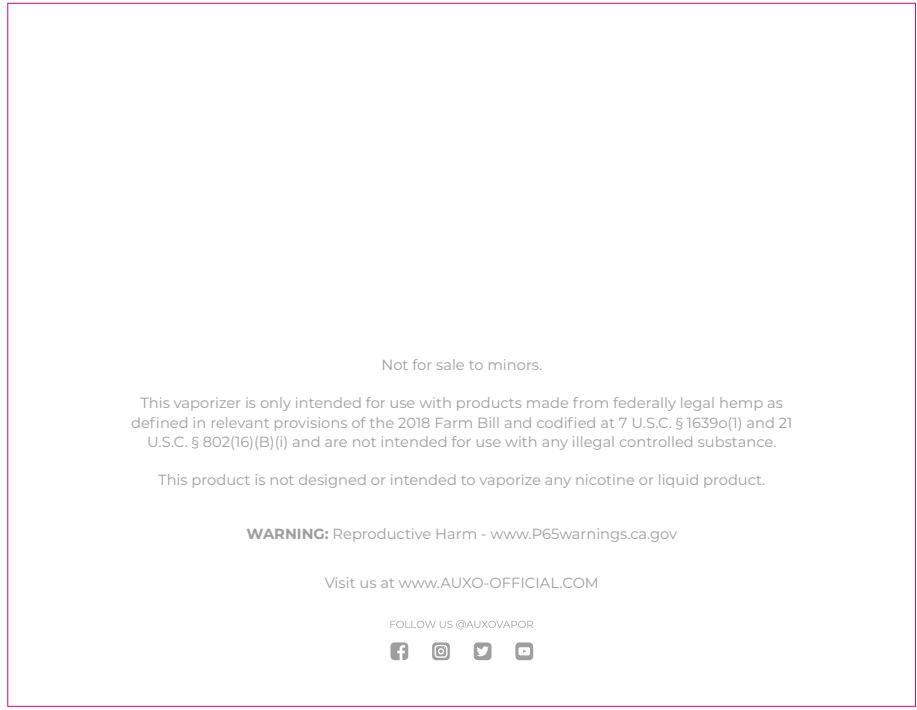
9



10



11



封底